

NOTE 2: Cladding 4200mm long, with each end fitted into an aluminium "H" section 35mm deep each side. An expansion gap of 6mm is planned. Noggins to be fitted between the battens to mount the "H" section joiner.


NOTE 1: Extend battens down below the existing wall to accommodate the full width board from the previous section.

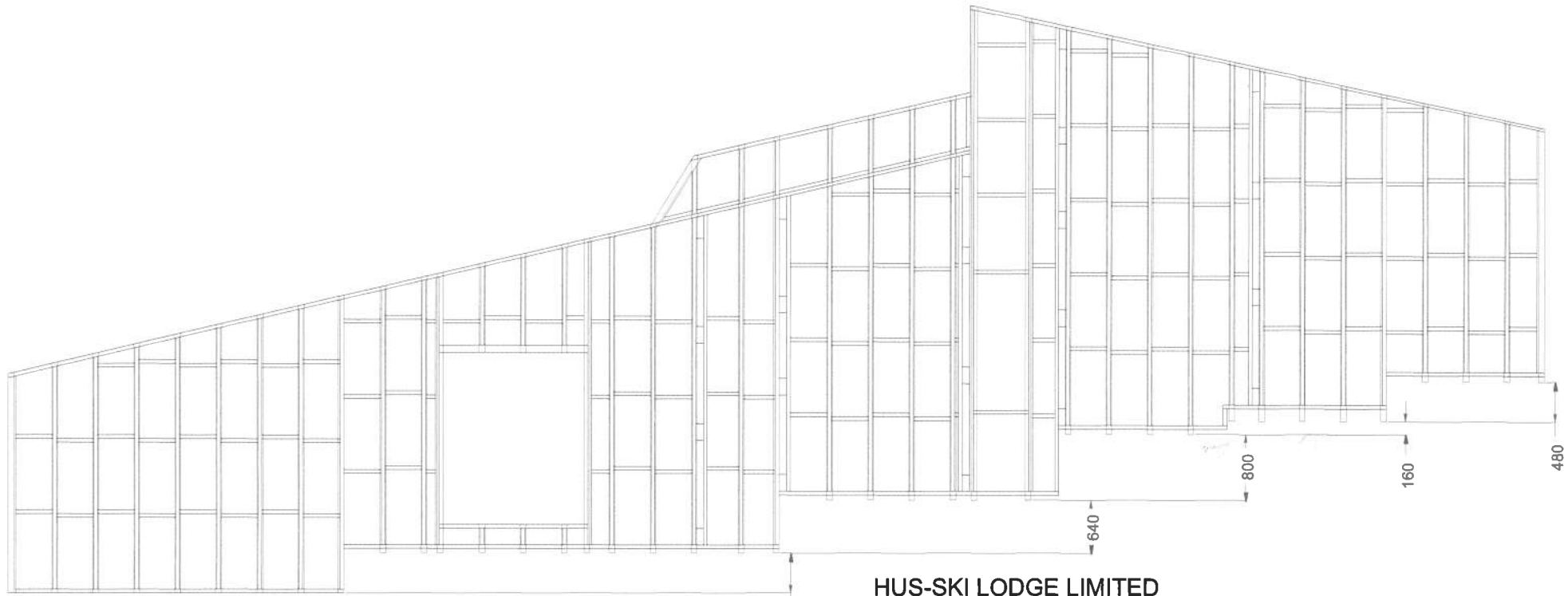
HUS-SKI LODGE LIMITED

WESTERN WALL CLADDING FIXING

28-9-13

SCALE: 1 : 50

	NSW GOVERNMENT Planning & Infrastructure
<p>- 1 OCT 2013</p>	
DEVELOPMENT ASSESSMENT AND SYSTEMS PERFORMANCE RECEIVED - JINDABYNE	




NOTE 1: Extend battens down below the existing wall to accommodate the full width board from the previous section.

HUS-SKI LODGE LIMITED

WESTERN WALL BATTEN FIXING.

12-2-13

SCALE: 1 : 50



NSW GOVERNMENT
Planning & Infrastructure

- 1 OCT 2013

DEVELOPMENT ASSESSMENT AND
SYSTEMS PERFORMANCE
RECEIVED - JINDABYNE

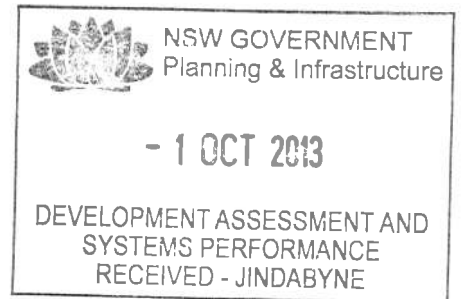


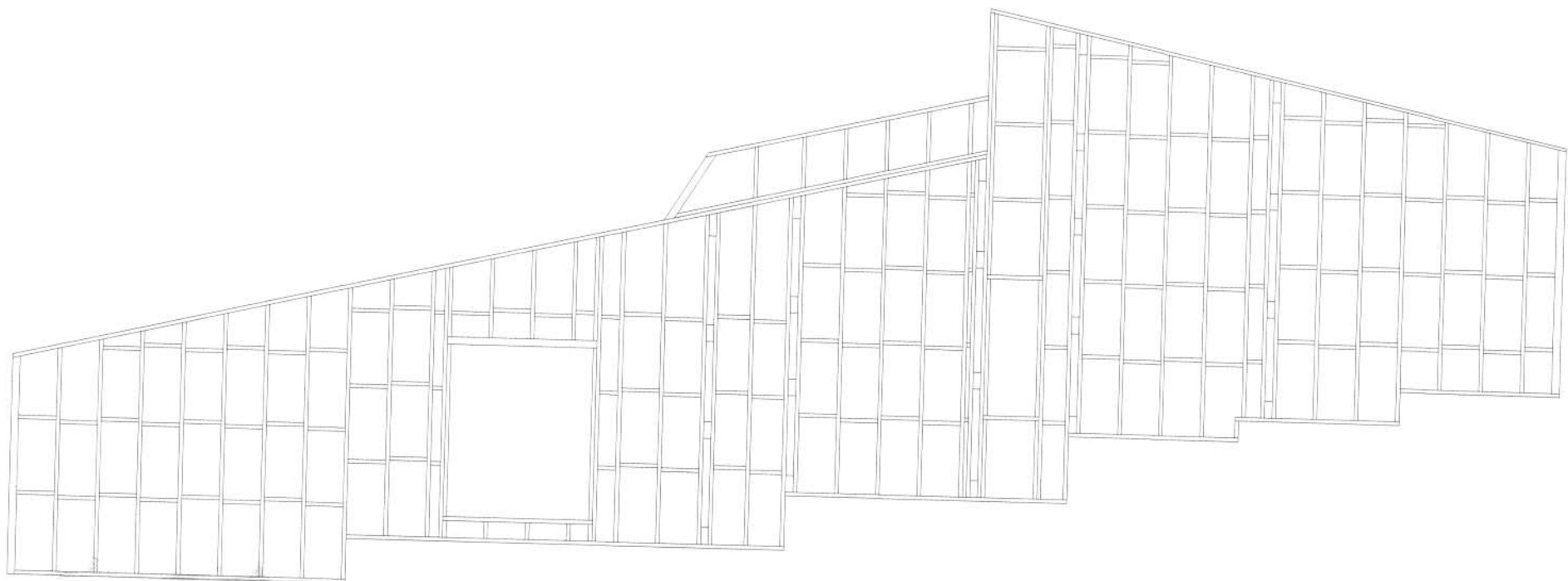
HUS-SKI LODGE LIMITED

WESTERN WALL INSULATION SHEETS 2400 X 1200

12-2-13

SCALE: 1 : 50






HUS-SKI LODGE LIMITED

WESTERN WALL STUD ARRANGEMENT

12-2-13

SCALE: 1 : 50

 NSW GOVERNMENT
Planning & Infrastructure

- 1 OCT 2013

DEVELOPMENT ASSESSMENT AND
SYSTEMS PERFORMANCE
RECEIVED - JINDABYNE